

INFORMATION SESSION - WILDFIRE

NAVIGATING THE BC WILDFIRE SERVICE WEBSITE – WWW.BCWILDFIRE.CA

BC Wildfire Service
Coastal Fire Centre
2019 Fire Season

JURISDICTION – COASTAL FIRE CENTRE

The Coastal Fire Centre extends west of the highest point on the Coast Mountain range, from the U.S.-Canada border at Manning Park to the northern border of South Tweedsmuir Provincial Park, and including the Lower Mainland, Sunshine Coast, Vancouver Island, the Gulf Islands and Haida Gwaii.

The Coastal Fire Centre covers about 16.5 million hectares of land and contains over 85% of B.C.'s population. It has working relationships with over 164 fire departments and 28 regional districts, as well as First Nations communities, the forest industry and private land holders.

Much of the terrain is steep and rugged with access limitations in some areas (e.g. limited road availability), requiring air, water and ground transportation.



Where to go for information: www.bcwildfire.ca

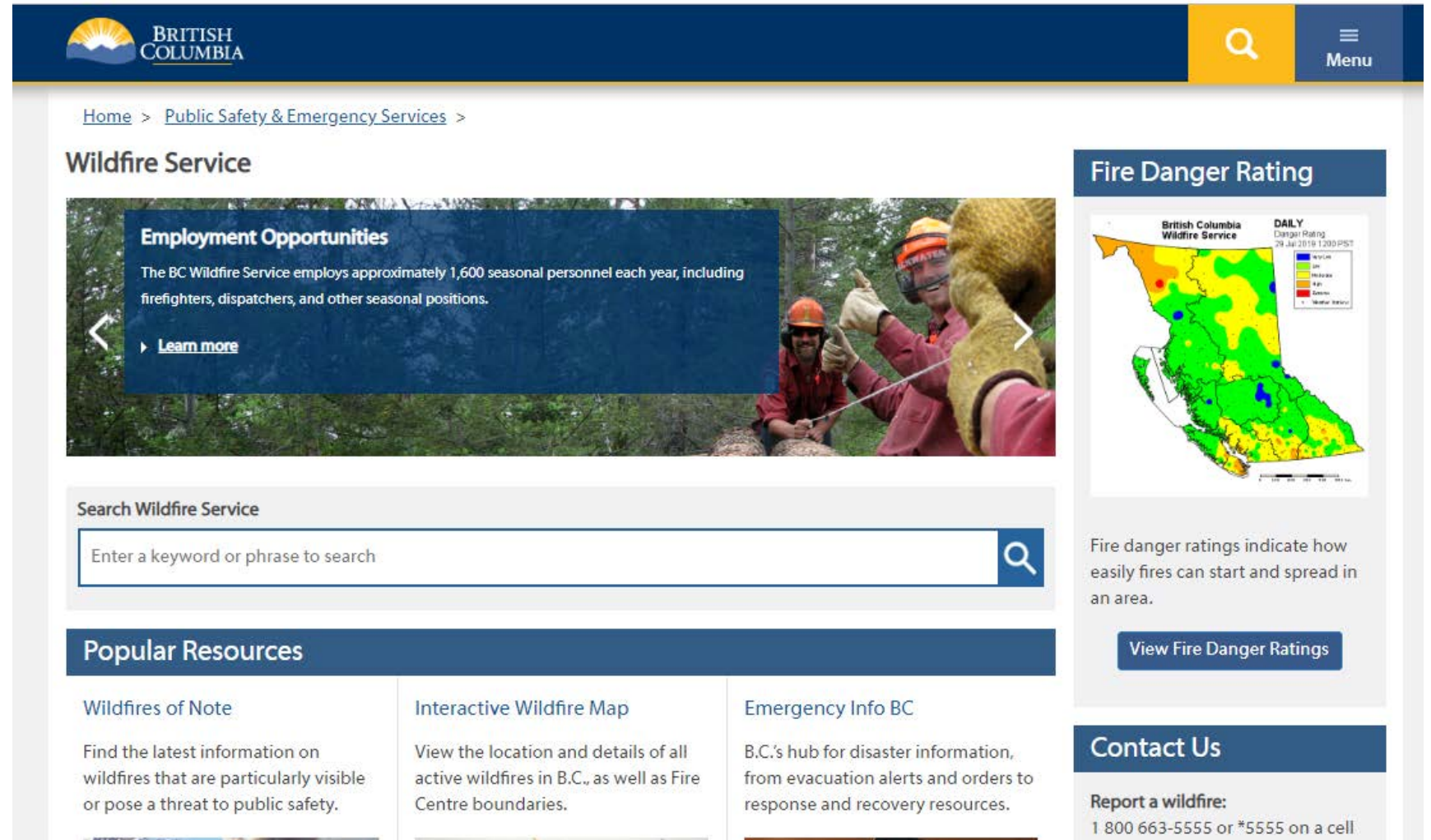
Fire Information: On the main page of the BC Wildfire Service website are links to:

Interactive Wildfire Map – a graphic overview of the current wildfire situation in B.C.

Wildfires of Note – details about interface fires (fires that affect communities or infrastructure) and/or larger fires.

Current Wildfire Activity – an overview of the current situation

Information Bulletins – media releases can be found here



The screenshot shows the BC Wildfire Service website homepage. The header features the British Columbia logo, a search icon, and a menu icon. The main content area is titled "Wildfire Service" and includes a breadcrumb trail: Home > Public Safety & Emergency Services >. A large banner image shows firefighters in a forest, with a blue overlay box titled "Employment Opportunities" containing the text: "The BC Wildfire Service employs approximately 1,600 seasonal personnel each year, including firefighters, dispatchers, and other seasonal positions." Below this is a "Learn more" link. A search bar is labeled "Search Wildfire Service" and contains the placeholder text "Enter a keyword or phrase to search". Below the search bar is a "Popular Resources" section with three columns: "Wildfires of Note" (Find the latest information on wildfires that are particularly visible or pose a threat to public safety.), "Interactive Wildfire Map" (View the location and details of all active wildfires in B.C., as well as Fire Centre boundaries.), and "Emergency Info BC" (B.C.'s hub for disaster information, from evacuation alerts and orders to response and recovery resources.). On the right side, there is a "Fire Danger Rating" section featuring a map of British Columbia with a color-coded legend for "DAILY Danger Rating" (Low, Moderate, High, Extreme, Very High) and a "View Fire Danger Ratings" button. Below the map, text explains that fire danger ratings indicate how easily fires can start and spread in an area. At the bottom right, there is a "Contact Us" section with a "Report a wildfire" button and the phone number 1 800 663-5555 or *5555 on a cell.

Interactive Wildfire Map – Overview

- **Red dots** indicate active fires that have been reported in the last 24 hours. (The red colour does not denote the fire's severity.)
- **Yellow dots** indicate active fires that were reported previously and are still burning.

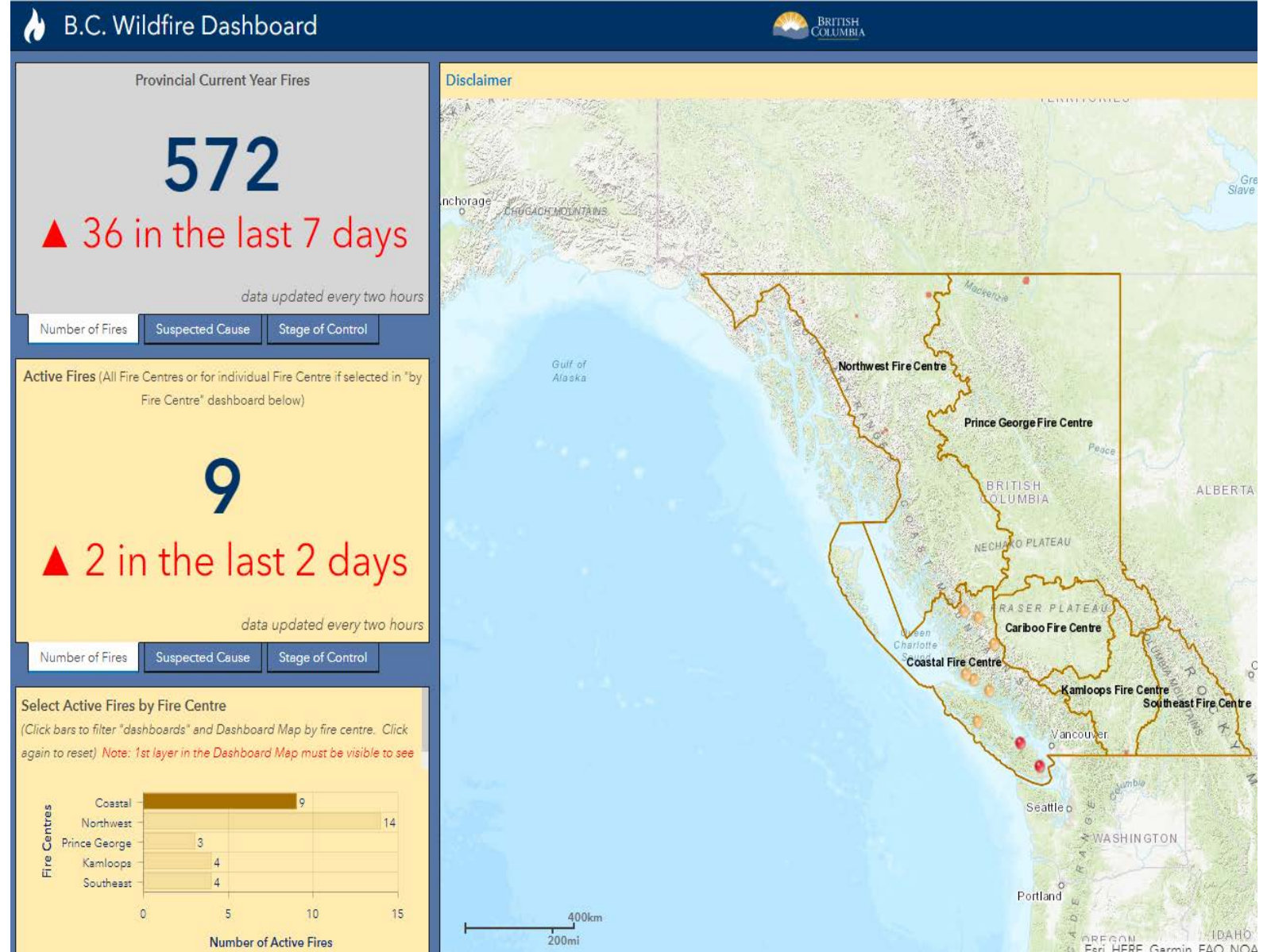
Stages of Control

Out of Control - Describes a wildfire that is not responding (or only responding on a limited basis) to suppression action, such that the perimeter spread is not being contained.

Being Held - Indicates that (with the resources currently committed to the fire) sufficient suppression action has been taken that the fire is not likely to spread beyond existing or predetermined boundaries under the prevailing and forecasted conditions.

Under Control - The fire has received sufficient suppression action to ensure no further spread of the fire.

Out - The fire has been extinguished.



Fire Danger Rating (the top-right part of the main page) Click on “View Fire Danger Ratings” and scroll down to a group of links that will take you to specific weather station readings for the fire centre that you choose.

Low: Fires may start easily and spread quickly, but there will be minimal involvement of deeper fuel layers or larger fuels.

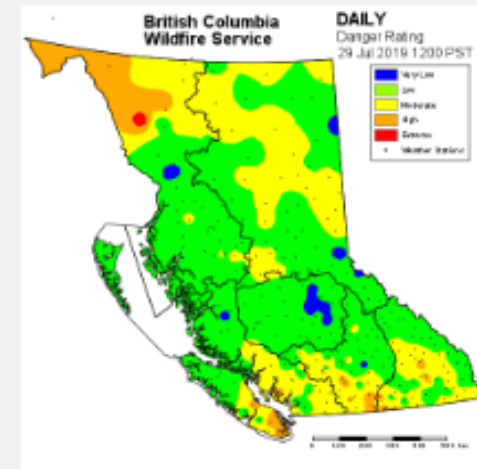
Moderate: Forest fuels are drying out and there is an increased risk of surface fires starting. Carry out any forest activities with caution.

High: Forest fuels are very dry and the fire risk is serious. New fires may start easily, burn vigorously, and challenge fire suppression efforts. Extreme caution must be used in any forest activities. Open burning and industrial activities may be restricted.

Extreme: Forest fuels are extremely dry and the fire risk is very serious. New fires will start easily, spread rapidly, and challenge fire suppression efforts. General forest activities may be restricted, including open burning, industrial activities and campfires.

* People carrying out industrial activities who want to apply the danger class information from this website must determine that the weather station location is representative of their operational area.

Fire Danger Rating



Fire danger ratings indicate how easily fires can start and spread in an area.

[View Fire Danger Ratings](#)

Danger Class

Coastal Fire Centre - Tuesday, July 30, 2019

The danger class values presented on this site are direct the danger class information from this website must del

5 = Extr

N

[Dgr Rgn] Station

- [3] ALLISON PASS
- [3] ANDERSON CREEK
- [1] APE LAKE
- [1] BEAVER CREEK
- [1] BIG SILVER 2
- [1] BOWSER
- [1] CALLAGHAN VALLEY (EC)
- [1] CAPILANO GVRD
- [1] CEDAR
- [1] CHEAKAMUS
- [1] COQUITLAM GVRD
- [3] D'ARCY
- [1] FORD MOUNTAIN
- [3] FOUR BARREL TEST
- [3] FRANK CREEK TEST
- [1] HAGENSBORG 2
- [1] HAIG CAMP
- [1] HONNA
- [1] MACHMELL
- [1] MACHMELL KLINIKLINI

FIRE DANGER RATINGS

Weather has a significant impact on wildfires, in terms of how they start, how aggressively they spread, and how long they burn. The fire danger rating is an indication of how dry conditions are and how rapidly a wildfire will spread (taking into account ignition conditions and fuel sources).

Fire Weather On the Fire Danger Rating page is a box in the upper right-hand corner.



You will find a section titled **Weather Maps**. Clicking on this link will bring you to a page with a series of maps, as shown below.



On the **Weather Maps** page you will find additional links that include: **Lightning Danger (Map)**, **Smoke Forecast** and the **Venting Index**.

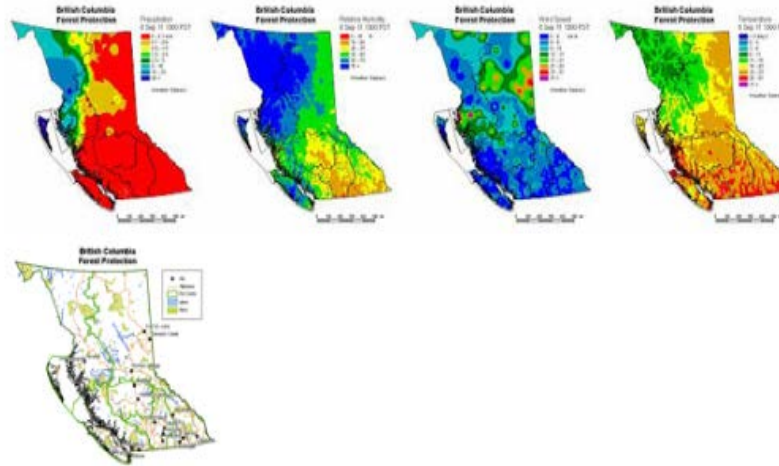
Fire Weather



Check [weather conditions in B.C.](#)

Weather Maps

Click to [view maps](#) showing the precipitation levels, wind speed, relative humidity and temperature across B.C.



Related Links

- [Lightning Danger \(map\)](#)
- [Smoke Forecast](#)
- [Venting Index](#)

FIRE WEATHER

Collectively, fire weather considers all parameters that influence fire occurrence and subsequent fire behaviour, including temperature, relative humidity, wind speed, direction, precipitation and atmospheric stability.

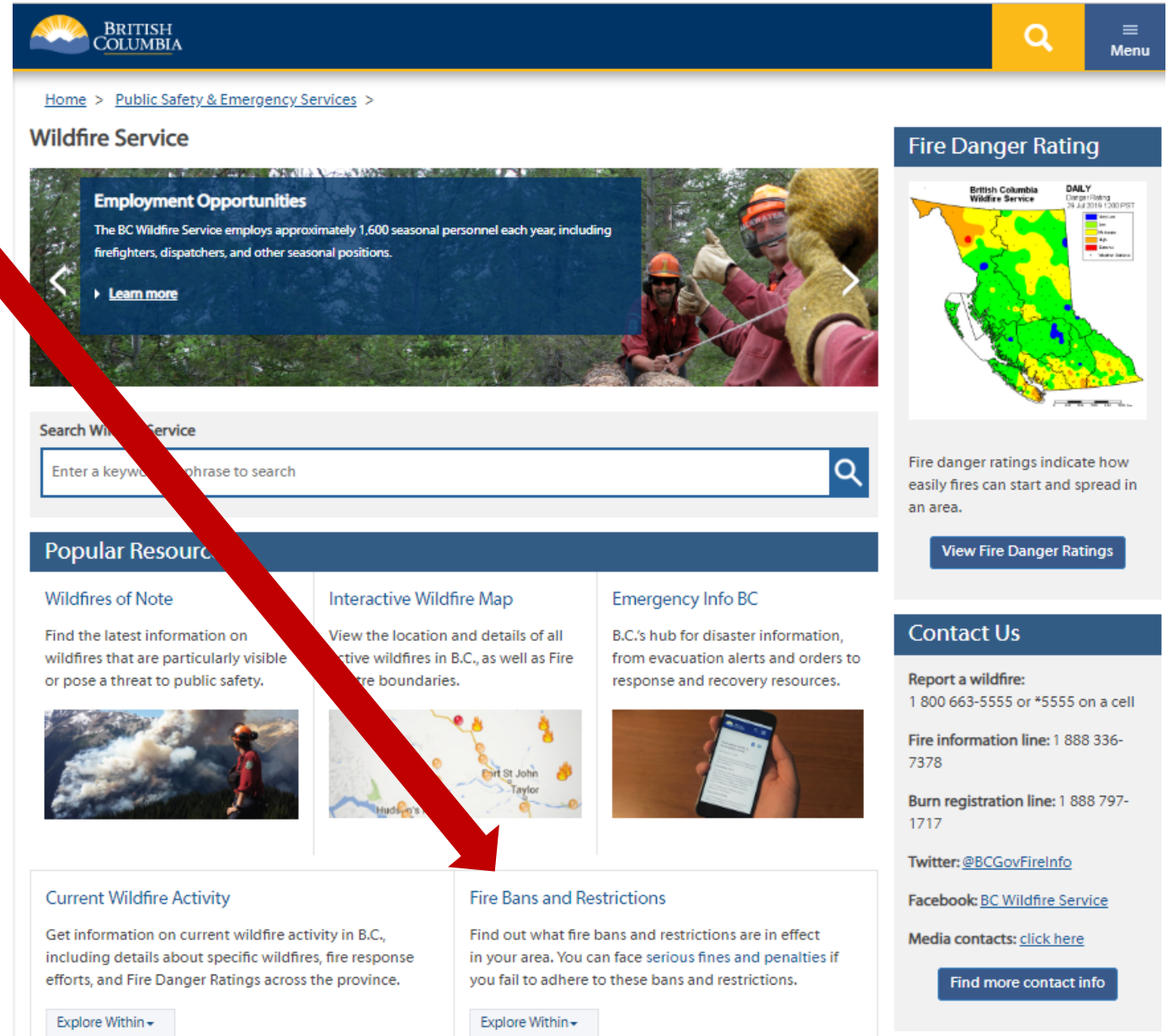
Open Fire Prohibitions (fire bans)

Information about open burning prohibitions and restrictions is accessible through a link on the main page. When prohibitions are enacted, they are communicated to the public through the media.

Decisions to implement prohibitions are based on scientific data. The Build-Up Index is a good indicator of the dryness of forest fuels and is used to determine if an Open Burning Prohibition should be implemented. The BC Wildfire Service looks at a broad area and implements prohibitions as needed. Fire officials also take local knowledge into consideration and speak to fire zone staff and local fire departments when determining, for example, if campfires should be prohibited.

A fire centre's administrative area aligns with natural resource district boundaries.

Local governments may administer the use of fire within their jurisdictions through a bylaw.



The screenshot shows the BC Wildfire Service website. At the top is the BC logo and navigation links. The main content area features a 'Wildfire Service' header, an 'Employment Opportunities' banner, a search bar, and a 'Popular Resources' section. The 'Popular Resources' section includes 'Wildfires of Note', 'Interactive Wildfire Map', and 'Emergency Info BC'. Below this, there are two columns: 'Current Wildfire Activity' and 'Fire Bans and Restrictions'. A large red arrow points from the text on the left towards the 'Fire Bans and Restrictions' section.

Employment Opportunities
The BC Wildfire Service employs approximately 1,600 seasonal personnel each year, including firefighters, dispatchers, and other seasonal positions.
[Learn more](#)

Search Wildfire Service
Enter a keyword or phrase to search

Popular Resources

- Wildfires of Note**
Find the latest information on wildfires that are particularly visible or pose a threat to public safety.
- Interactive Wildfire Map**
View the location and details of all active wildfires in B.C., as well as Fire Centre boundaries.
- Emergency Info BC**
B.C.'s hub for disaster information, from evacuation alerts and orders to response and recovery resources.

Current Wildfire Activity
Get information on current wildfire activity in B.C., including details about specific wildfires, fire response efforts, and Fire Danger Ratings across the province.
[Explore Within](#)

Fire Bans and Restrictions
Find out what fire bans and restrictions are in effect in your area. You can face **serious fines and penalties** if you fail to adhere to these bans and restrictions.
[Explore Within](#)

Fire Danger Rating
British Columbia Wildfire Service
DAILY Danger Rating
25 Jul 2016 1:00 PST
Legend: Low, Moderate, High, Extreme, Major Disaster
[View Fire Danger Ratings](#)

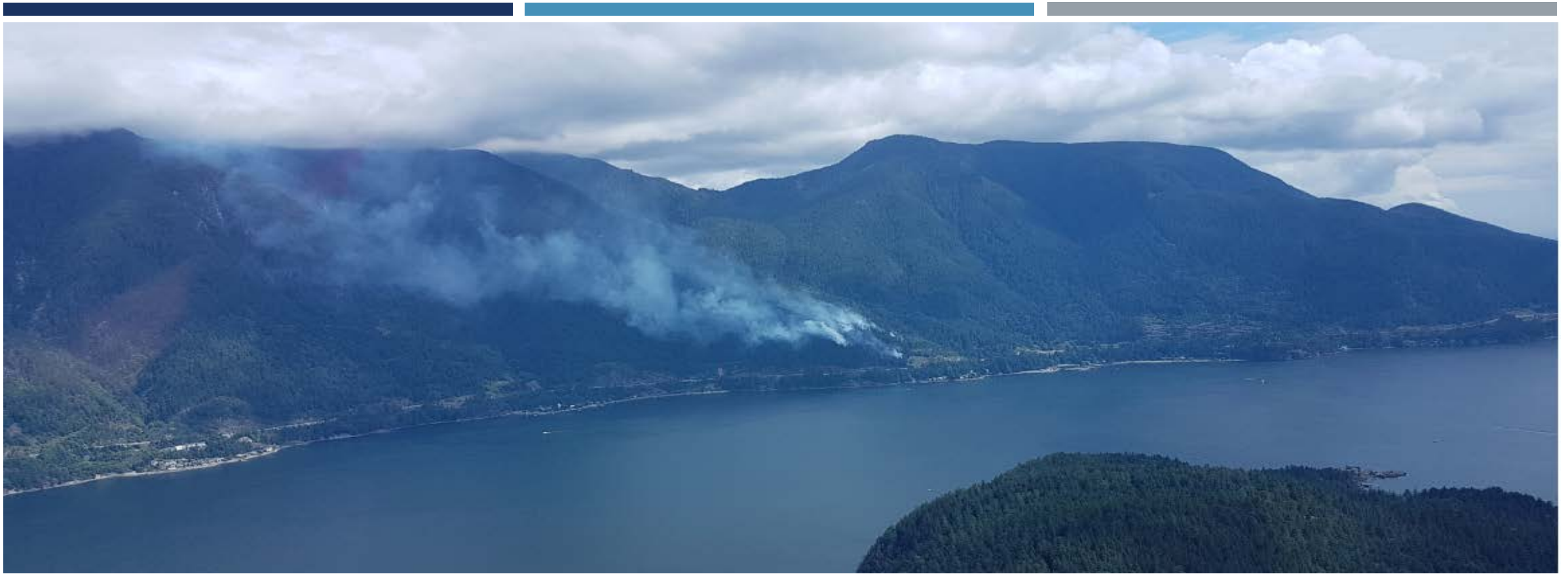
Fire danger ratings indicate how easily fires can start and spread in an area.

Contact Us
Report a wildfire: 1 800 663-5555 or *5555 on a cell
Fire information line: 1 888 336-7378
Burn registration line: 1 888 797-1717
Twitter: @BCGovFireInfo
Facebook: BC Wildfire Service
Media contacts: [click here](#)
[Find more contact info](#)

INFORMATION CONTACTS – COASTAL FIRE CENTRE

Title	Name	Email
Communication Specialist	Donna MacPherson	Donna.MacPherson@gov.bc.ca
Communication Specialist Assistant	Marg Drysdale	Marg.Drysdale@gov.bc.ca
Generic Contact	Phone: 250 951-4209	Email: BCWS.COFCInformationOfficer@gov.bc.ca
BC Wildfire Service	Twitter	@BCGovFireInfo
	Website	www.bcwildfire.ca
	Facebook	BC Wildfire Service
	Phone	1 888 3FOREST





THANK YOU

From BC Wildfire Service, Coastal Fire Centre